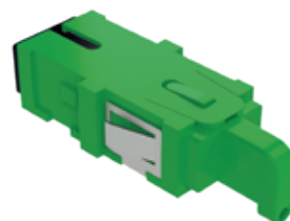
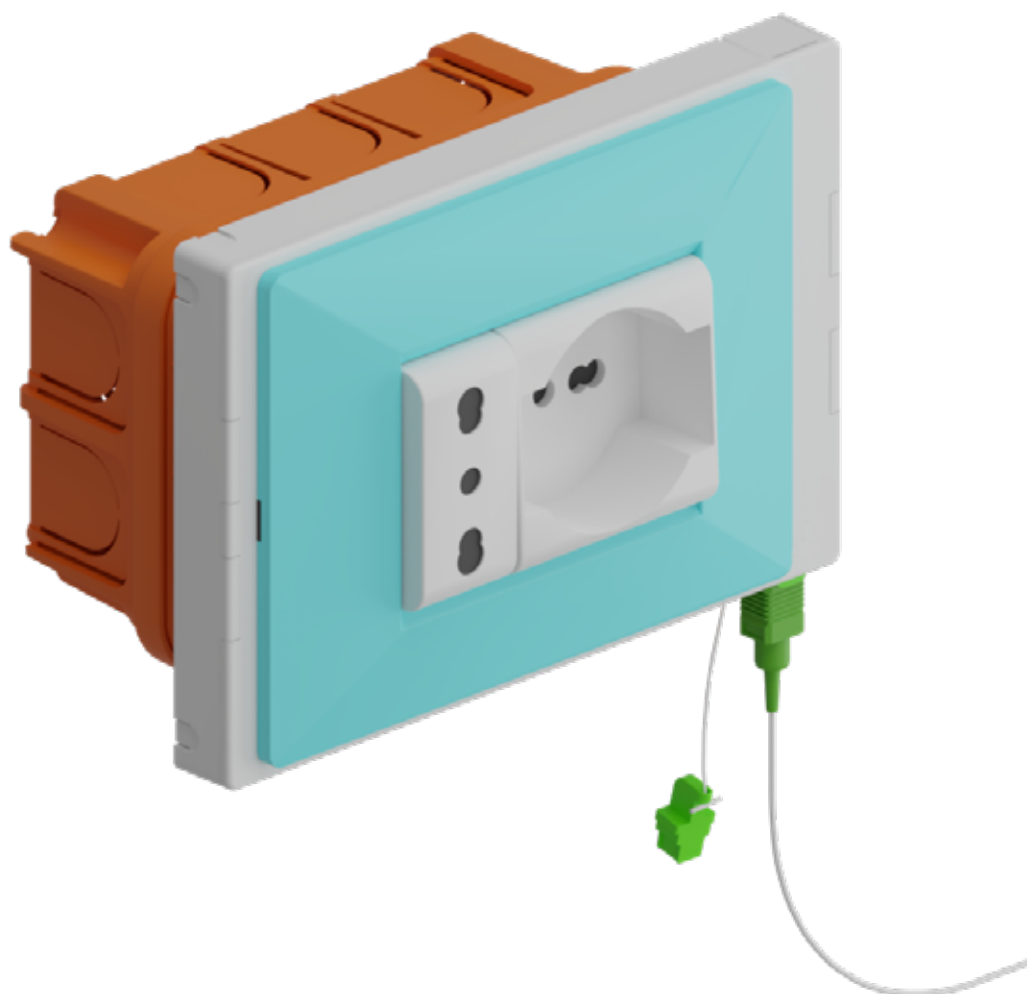


Easy Link

The innovative FTTH box
for pre-existing wall
outlets mounting



with Easy Lock adapter

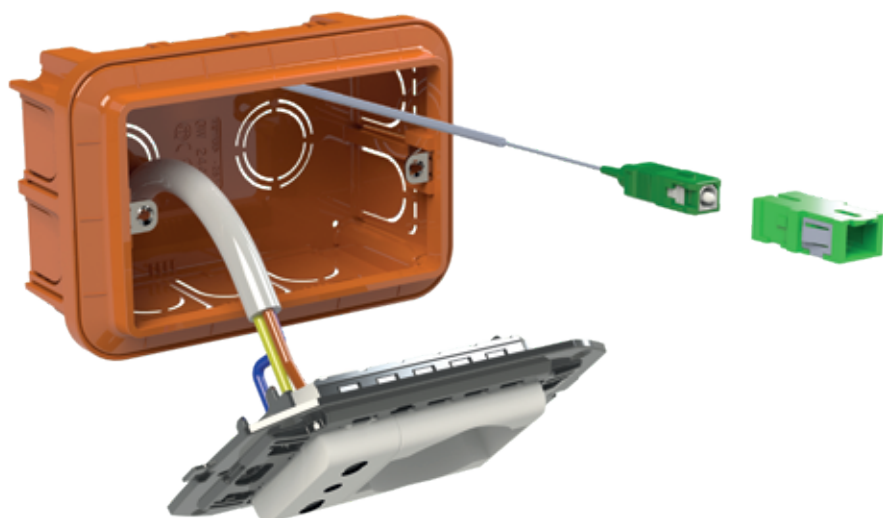
Easy Link is the ideal solution for FTTH installation in existing buildings.

Thanks to the special cover with a breakable slot, Easy Link can be either wall mounted or installed onto an existing socket, even fully occupied by other services.

The fiber cable on the system side can enter, even pre-connected, both flush with the wall and from the inside of the wall box.

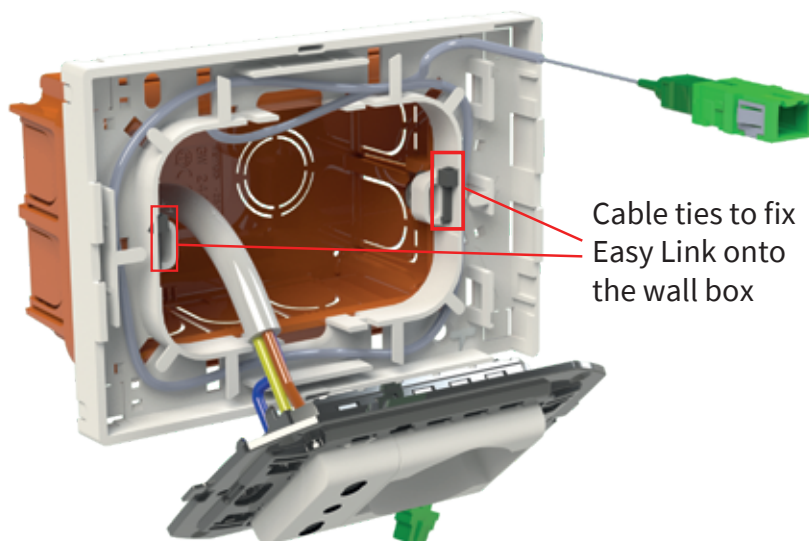
Easy Link is universal and compatible with any type of electrical building infrastructure system (power, TV, RJ45, etc.)

Easy Link assembly on existing sockets, either flush or wall mounted

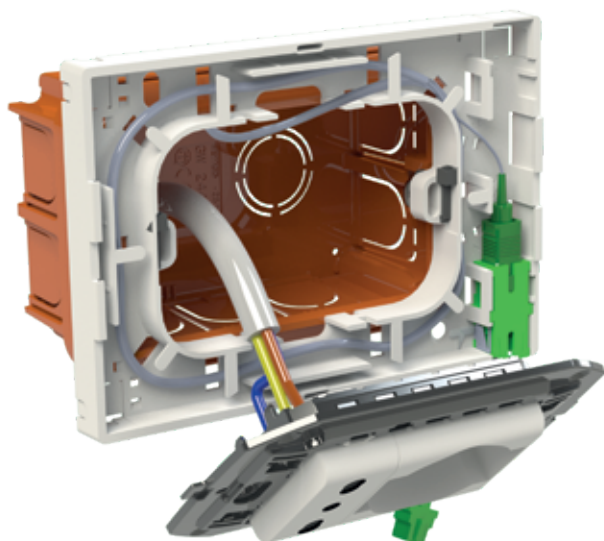


Remove the cover plate and the supporting frame from the wall box and insert the optical connector into the Easy Lock adapter.

Without disconnecting existing sockets, insert Easy Link body through the frame and pre-attach it to the wall box using the 2 cable ties supplied. Place the excess of the cable/fiber inside Easy Link.

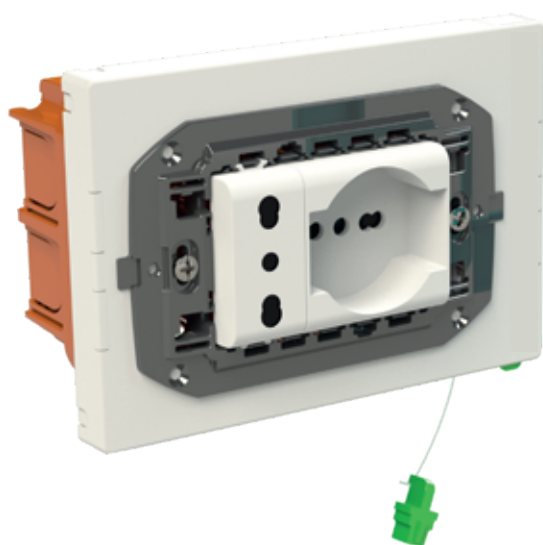
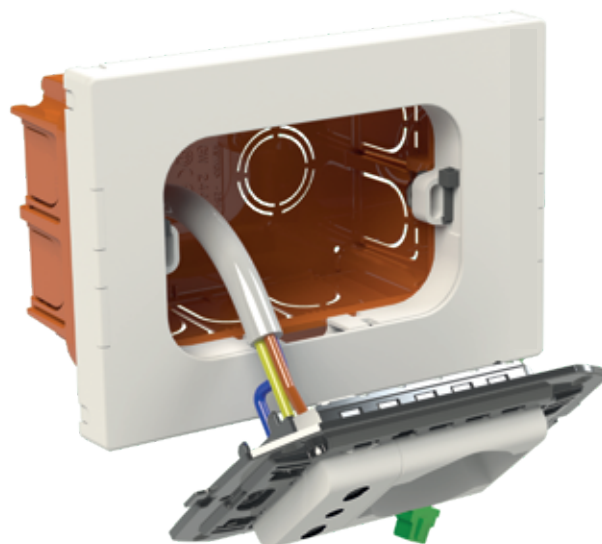


Cable ties to fix Easy Link onto the wall box



Insert the assembly 'connector+Easy Lock adapter' in one of the 2 specific spaces.

Remove the breakable central part of the cover, insert it through the socket frame and fix it over the Easy Link body, thus protecting the optical fiber inside it.



Place the frame socket on Easy Link and screw it onto the wall box: in this way Easy Link is firmly fixed to the wall.
Lastly reinsert the cover plate.

UNIQUE FEATURES OF EASY LINK

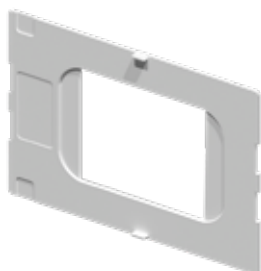
- Small footprint, only 13 mm of wall overhang
- Easy Lock user connection with safety lock (patent and IEC international standardization process pending)
- Simplified installation, with a single cable/fiber excess management tray
- Secure wall attachment thanks to the fixing screws of the existing socket frame
- Possibility of installation with cables pre-connected or connectorized on the field, with or without fiber joint
- Possibility of the optical cable entry on each of the four sides of Easy Link
- Possibility of adapter positioning on the right or left bottom side
- Space for RFID tag insertion
- Safety dust cap supplied with anti-loss strap

Easy Link is perfectly suited for any type of electrical building infrastructure system

DIFFERENT INSTALLATION POSSIBILITIES

Existing outlets mount

Cover for 2 sockets box



Cover for 3 sockets box



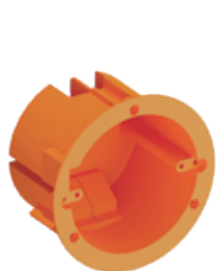
Wall mount

Closed cover



Examples of possible wall mounting boxes

Additional accessories



1/2 places
(Germany, UK, France, etc.)



3 places
(Italy, Egypt, etc.)



OEM
(Telecom Italia, etc.)



RJ11 Plug