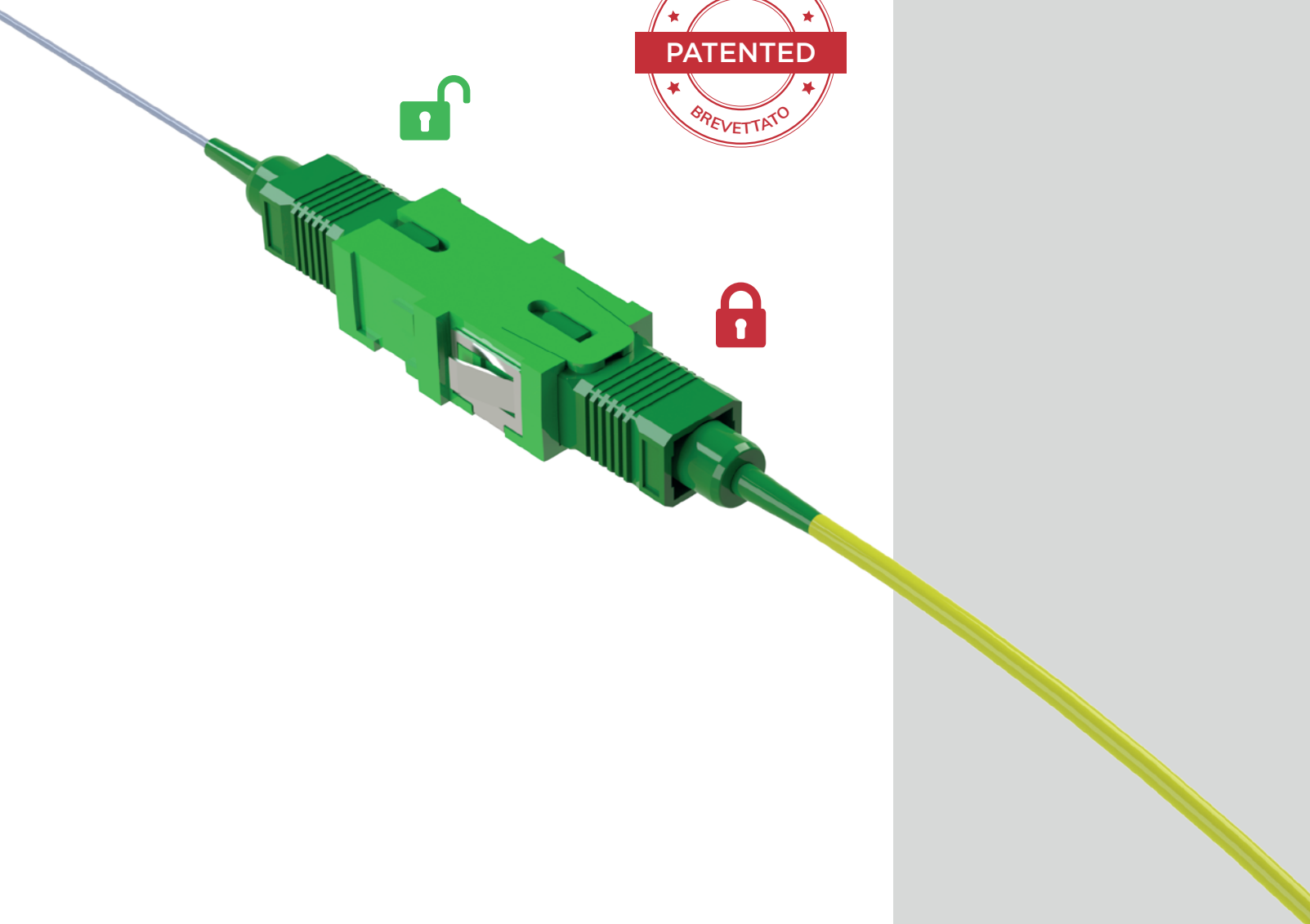
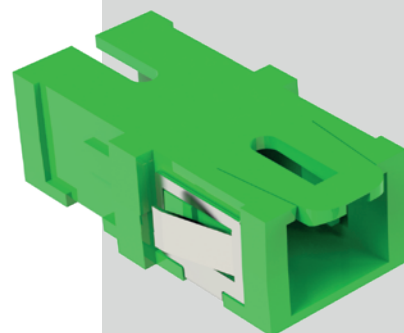


# Easy Lock

The innovative SC adapter with  
Safety Lock system



Easy Lock is an SC type fiber adapter with the addition of a flexible retaining element on top of its surface edge. With this solution, unwanted disconnection of the standard SC connector is not possible, unless a tool or a particular release maneuver is applied. This new adapter is mainly intended when optical fibers are handled by end users, but can be used also in situations where security problems are important (MDF in the central offices, closed-connect cabinets, termination boxes,...), as it guarantees full compatibility with IEC 61754-4 SC connectors.

### How to use Easy Lock

